

# THE SMITH

## Ground Floor

7,969 sq ft / 740 sq m

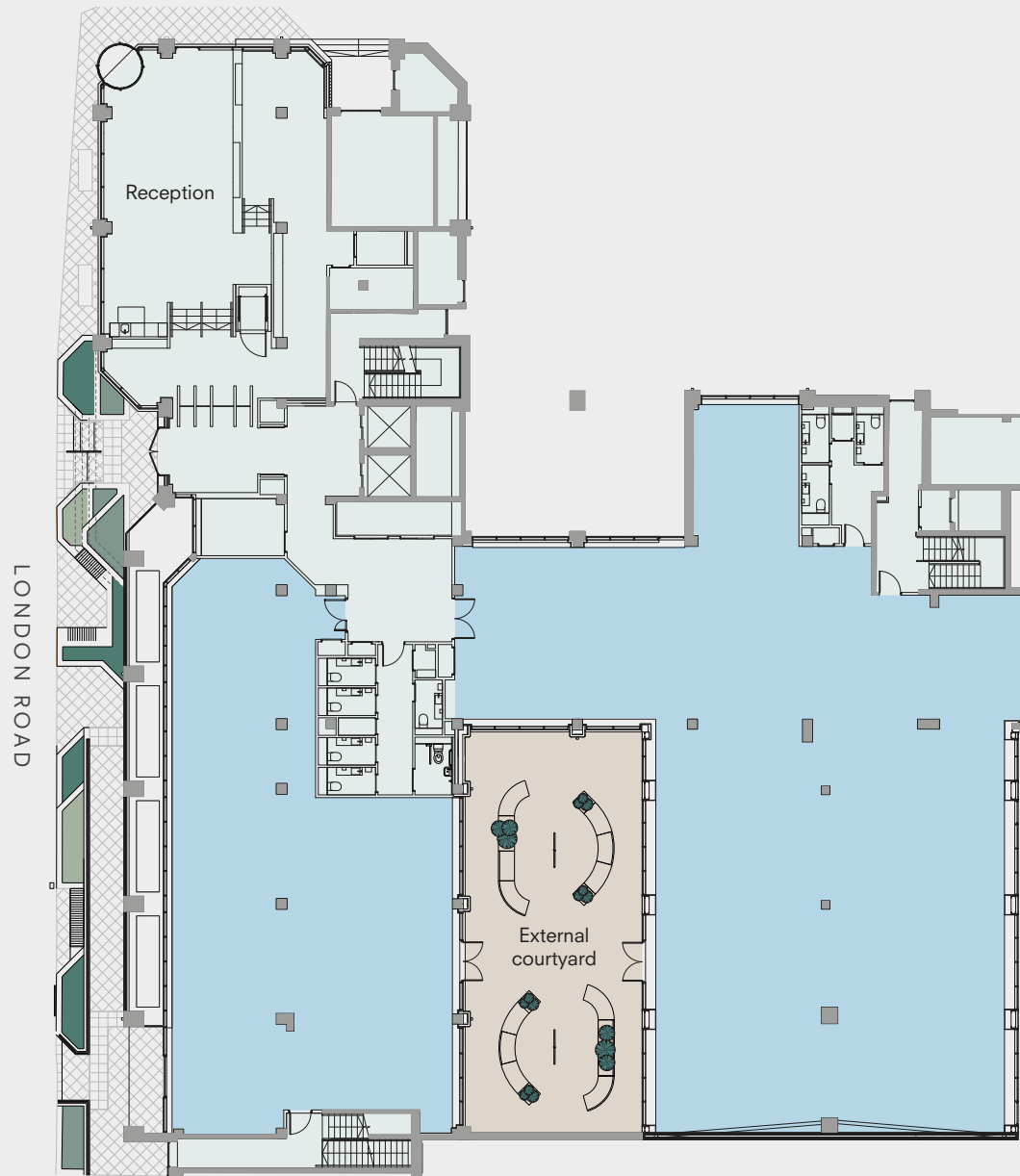
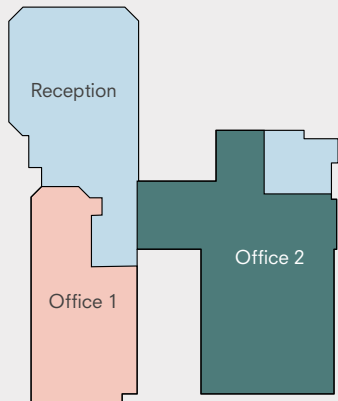
### Possible sub-division options of:

Office 1      2,649 sq ft / 246 sq m

Office 2      5,320 sq ft / 494 sq m

**Total      7,969 sq ft / 740 sq m**

\*approx net internal areas



# THE SMITH

## First Floor

11,334 sq ft / 1,053 sq m

### Possible sub-division options of:

Office 3      2,217 sq ft / 206 sq m

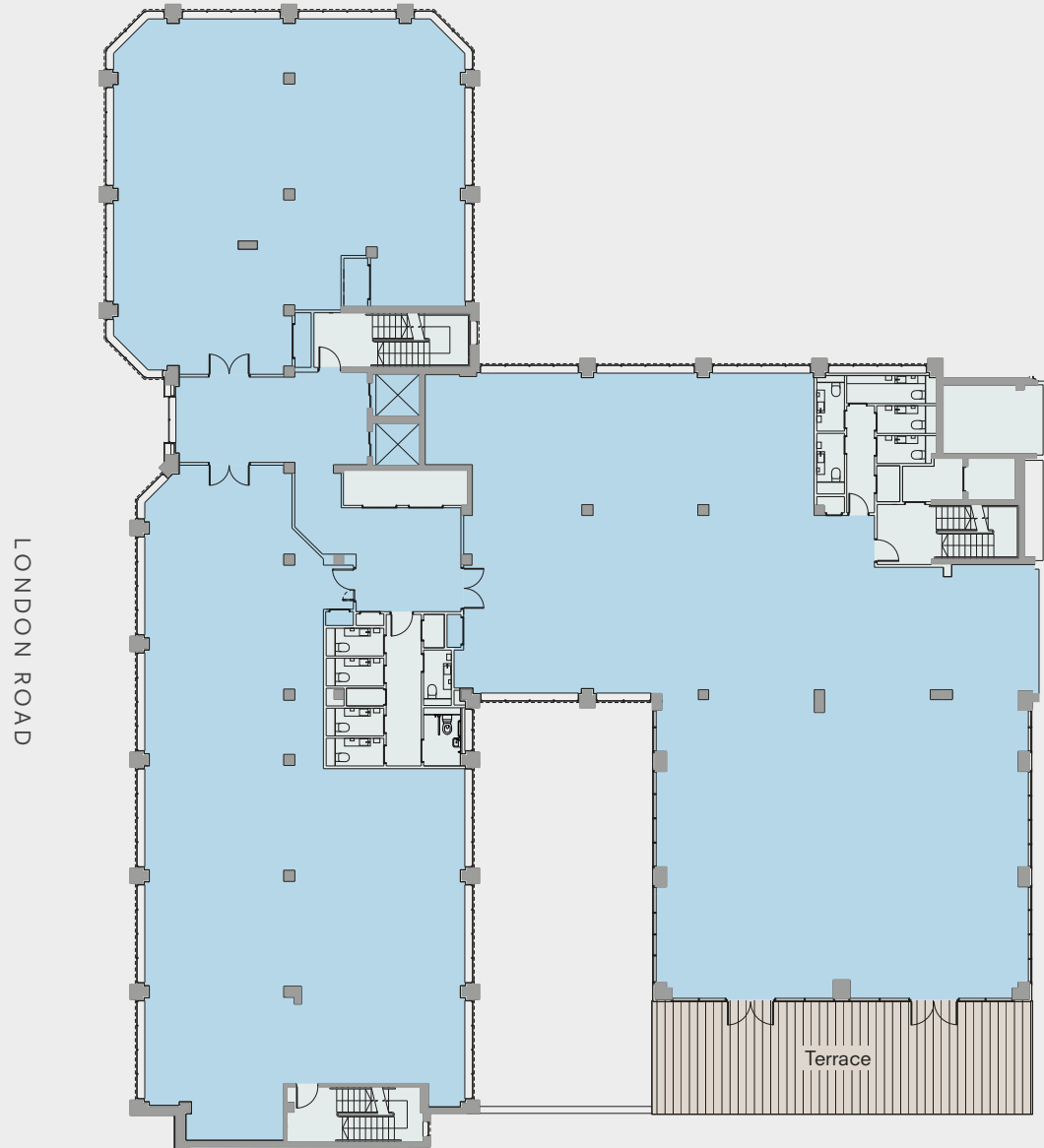
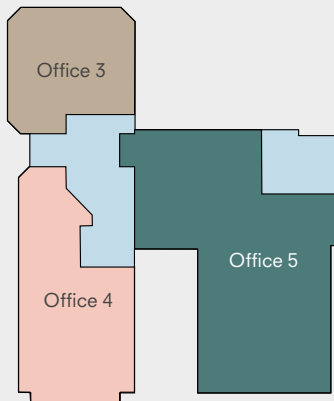
Office 4      3,244 sq ft / 301 sq m

Office 5      5,222 sq ft / 485 sq m

---

**Total      10,683 sq ft / 992 sq m**

\*approx net internal areas excluding lift lobby



# THE SMITH

## Second Floor

10,186 sq ft / 946 sq m

### Possible sub-division options of:

Office 6      2,214 sq ft / 206 sq m

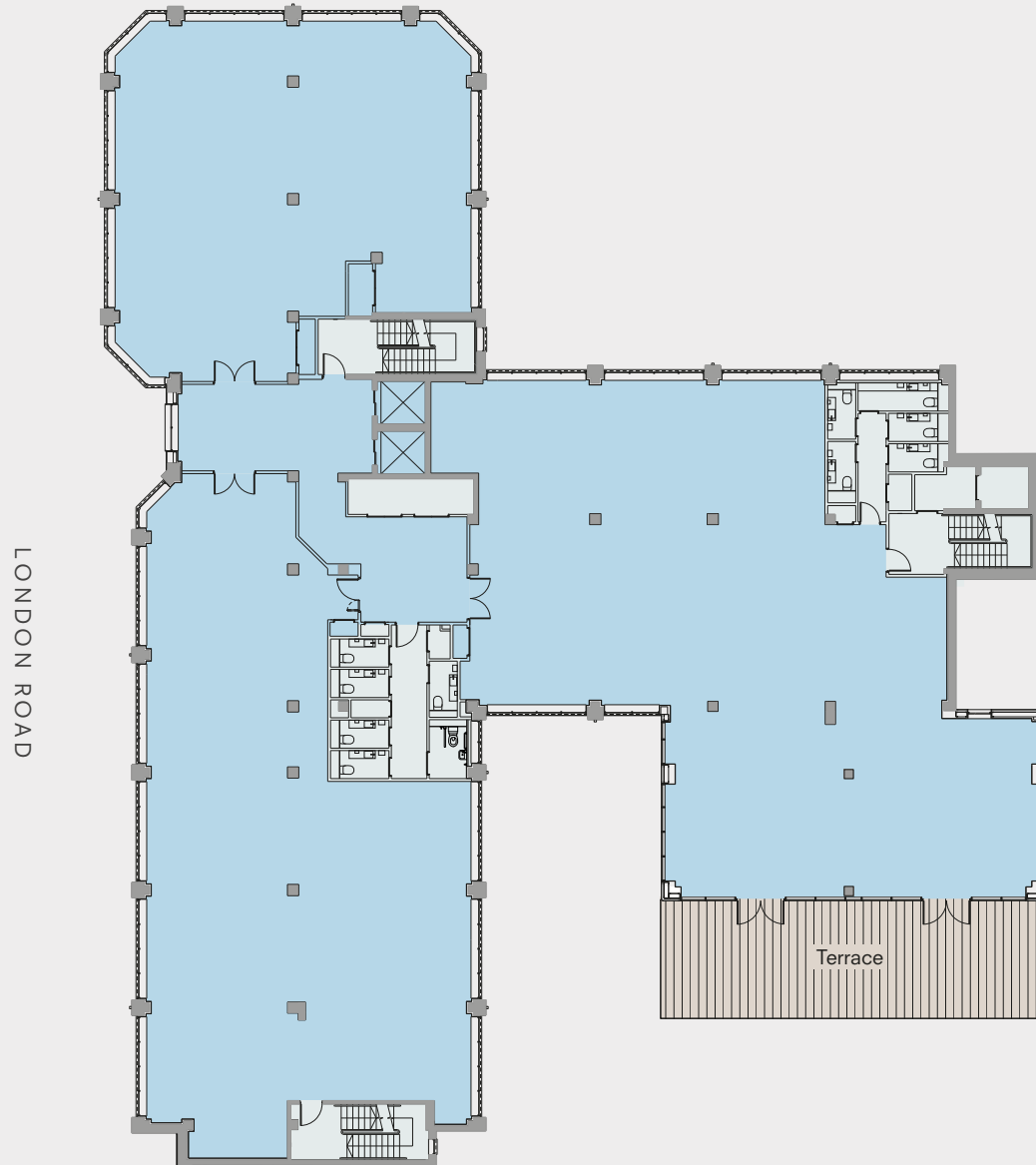
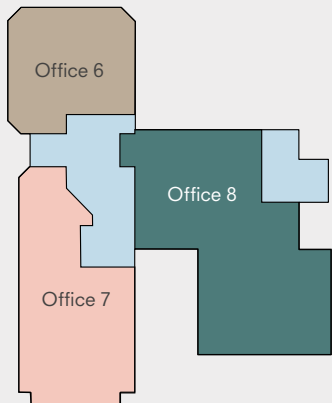
Office 7      3,244 sq ft / 301 sq m

Office 8      4,078 sq ft / 379 sq m

---

**Total      9,536 sq ft / 886 sq m**

\*approx net internal areas excluding lift lobby



# THE SMITH

## Third Floor

8,036 sq ft / 747 sq m

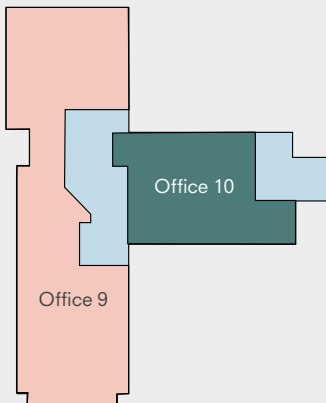
### Possible sub-division options of:

Office 9      5,088 sq ft / 473 sq m

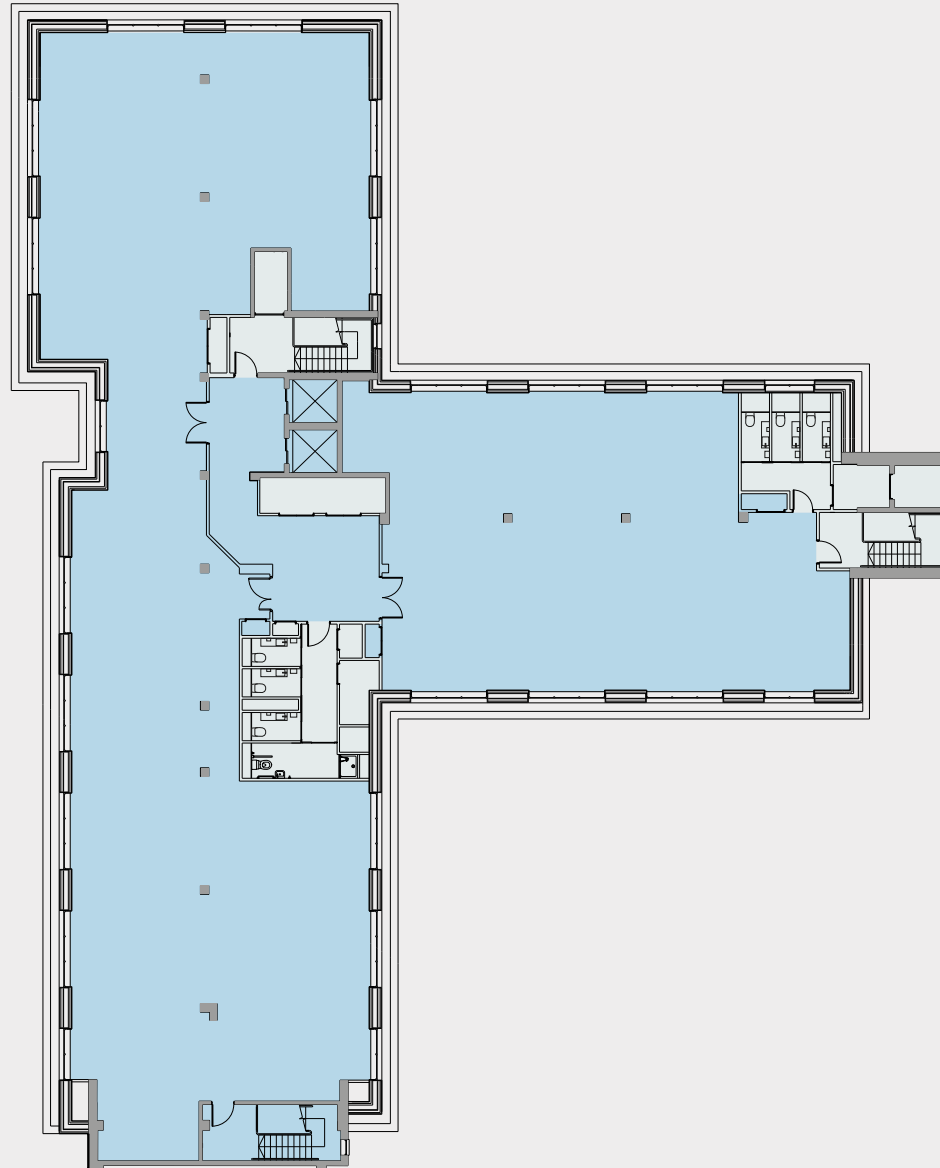
Office 10      2,499 sq ft / 232 sq m

**Total      7,587 sq ft / 705 sq m**

\*approx net internal areas excluding lift lobby



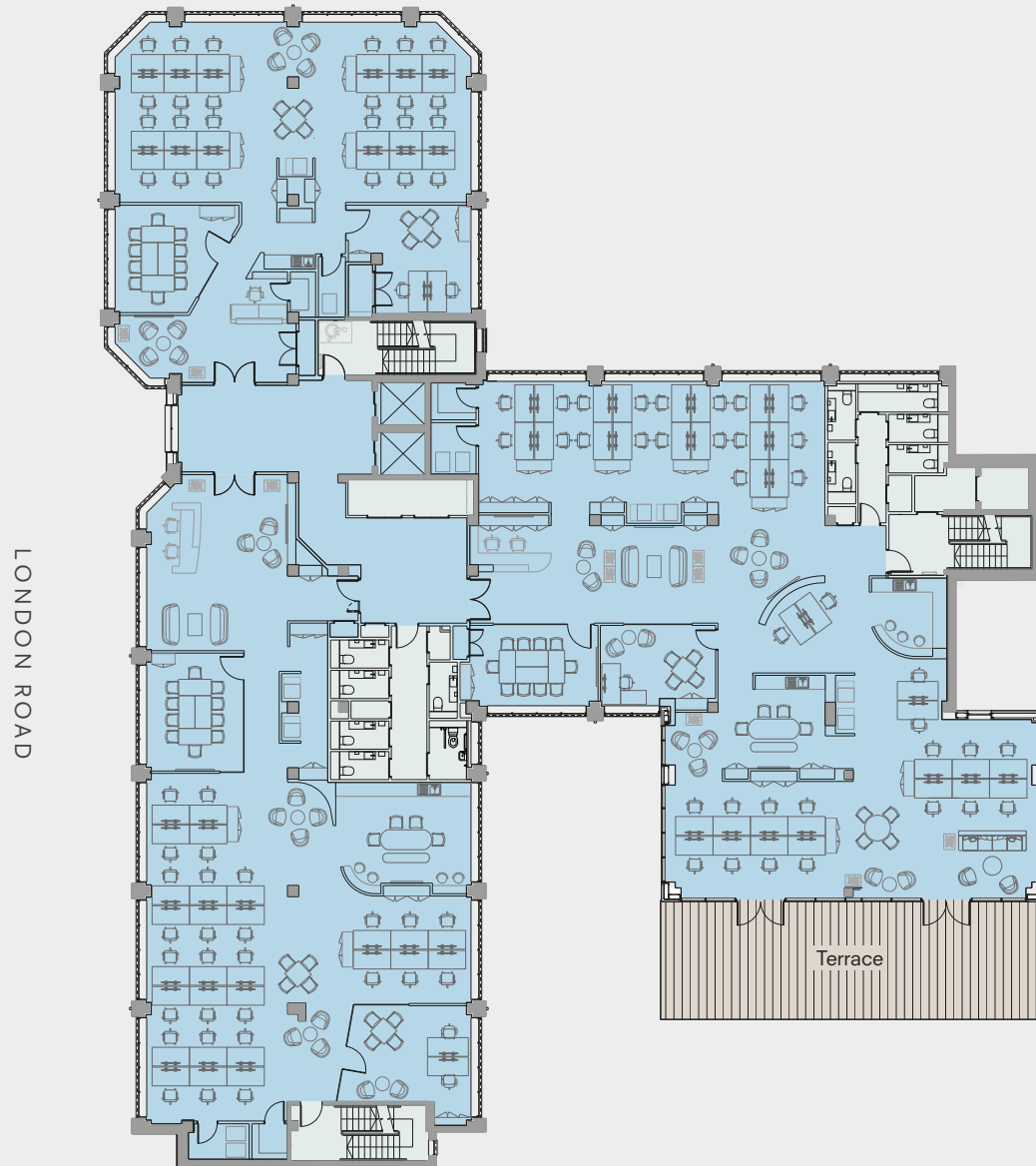
LONDON ROAD



# THE SMITH

## Space Plan Second Floor

- 82 Desks Open Plan
- 2 2 person Offices
- 1 1 person Office
- 2 10 person Meeting Room
- 5 Breakout / Informal Meeting Spaces
- 4 Kitchen Areas



# THE SMITH

## Basement

**60**  
Secure cycle  
storage spaces

**50**  
Parking spaces

**45**  
Lockers

**32**  
Vented lockers

**10**  
Electric car  
charge points

**4**  
Showers

